

A portrait of a woman with long, wavy blonde hair and blue eyes, wearing a white top with a lace-like pattern. The background is a plain, light gray.

CLR Product Range



AnnonaSense CLR™

INCI

INCI Name: Annona Cherimola Fruit Extract
Dosage: 3.0%
pH-range: > 5.2
Preservation: Sodium Dehydroacetate,
Phenylpropanol

Applications

Soothing, Calming, Anti-Stress

Marketing Opportunities

- Adaptogenic properties to relieve stress and rebalance skin
- Expands the body's natural capacity to handle stress
- Establishes a healthy homeostasis in the skin
- Reduces skin sensitivity and enhances the appearance of healthy skin



Arnica Oil CLR

INCI

INCI Name: Glycine Soja (Soybean) Oil, Arnica
Montana Flower Extract, Tocopherol

Dosage: 3.0 – 10.00%

Applications

Soothing, Calming, Anti-Stress
Anti-Hair Loss

Marketing Opportunities

- anti-inflammatory effect
- stimulates skin regeneration
- protects dry, sensitive skin and scalp
- prevents skin irritations



Belides™ ORG

INCI

INCI Name: Bellis Perennis (Daisy) Flower Extract
Dosage: 2.0% - 5.0%
pH-range: 4.5 - 6.5
Preservation: stabilized with phenethyl alcohol
Also available as: **Belides™** - preserved with phenoxyethanol, potassium sorbate
Belides™ NP –stabilized with small amounts of ethanol, phenethyl alcohol, glycerin and *Melissa officinalis*

Applications

Skin lightening

Marketing Opportunities

- Leaves skin more radiant
- Illuminates skin complexion
- Brings fairness and luminosity to skin
- Evens skin tone
- Boosts skin's translucency



Calendula Oil CLR

INCI

INCI Name: Glycine Soja (Soybean) Oil, Calendula
Officinalis Flower Extract, Tocopherol

Dosage: 3.0 – 10.00%

Applications

Soothing, Calming, Anti-Stress

Marketing Opportunities

- anti-inflammatory effects
- stimulates skin regeneration
- improves wound healing



Ceramide Complex CLR™ PE-F



INCI

INCI Name: Water, Pentylene Glycol, Phospholipids, Sphingolipids

Dosage: 5.0 - 10.0%

pH-range: 3.0 - 10.0

Preservation: unpreserved

Also available as: **Ceramide Complex CLR™ K** preserved with phenoxyethanol and potassium sorbate.

Applications

Moisturizing, Barrier maintenance and repair, Hair conditioning and protection

Marketing Opportunities

- Provides an immediate feeling of hydration and comfort
- Deeply moisturizes and softens skin
- Enhances the barrier function of the skin
- Contributes to bring back skin's hydration, softness smoothness



CutiBiome™ CLR- Skin

INCI

INCI Name: Octyldodecanol, Leptospermum
Scoparium Branch/Leaf Oil, Piper Nigrum
Seed Extract, Magnolia Officinalis Bark
Extract

Dosage: 1.5 - 3.0%

pH-range: 4.0 - 7.0

Preservation: none

Applications

Anti-acne, Soothing, Calming, Anti-stress

Marketing Opportunities

- Restores balance to oily and troubled skin
- Fights the appearance of spots, shine and blocked pores
- Effectively targets breakouts of pimples for a healthy, balanced complexion
- Gently balances your skin's and scalp's microbiome



CutiBiome™ CLR- Scalp

INCI

INCI Name: Octyldodecanol, Leptospermum
Scoparium Branch/Leaf Oil, Piper Nigrum
Seed Extract, Magnolia Officinalis Bark
Extract

Dosage: 1.5 - 3.0%

pH-range: 4.0 - 7.0

Preservation: none

Applications

Anti-acne, Soothing, Calming, Anti-stress

Marketing Opportunities

- Gently balances your skin's and scalp's microbiome
- Regulates sebum to effectively reduce dandruff and scalp oiliness
- Soothes scalp and reliefs itch caused by dandruff



DayMoist CLR™- Skin

INCI

INCI Name: Water, Hydrolyzed Corn Starch, Beta Vulgaris (Beet) Root Extract

Dosage: 1.0 - 3.0%

pH-range: 3.0 - 10.0

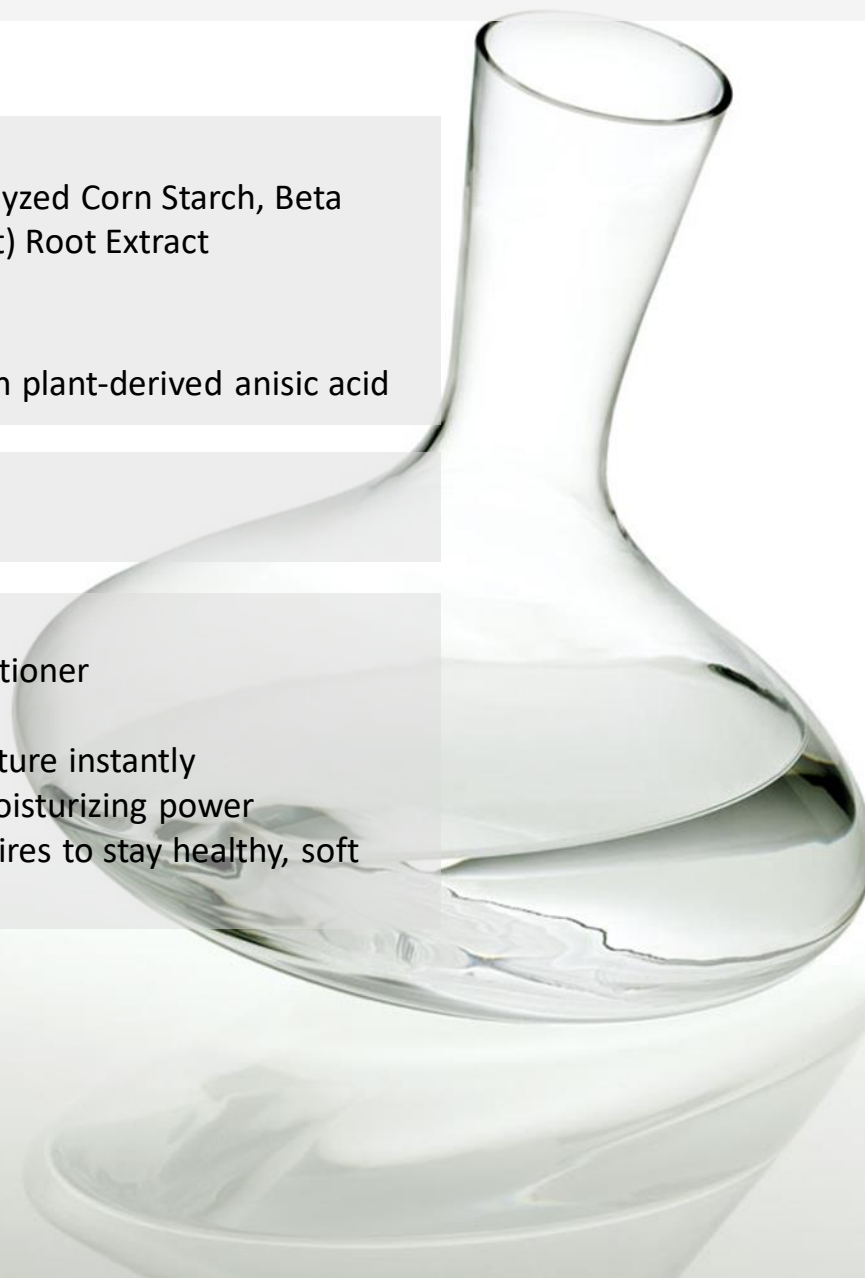
Preservation: stabilized with plant-derived anisic acid

Applications

Moisturizing

Marketing Opportunities

- Acts as a natural skin conditioner
- Keeps skin hydrated all day
- Replenishes skin with moisture instantly
- Improves the skin's own moisturizing power
- Feeds the skin what it requires to stay healthy, soft and beautiful



DayMoist CLR™- Hair

INCI

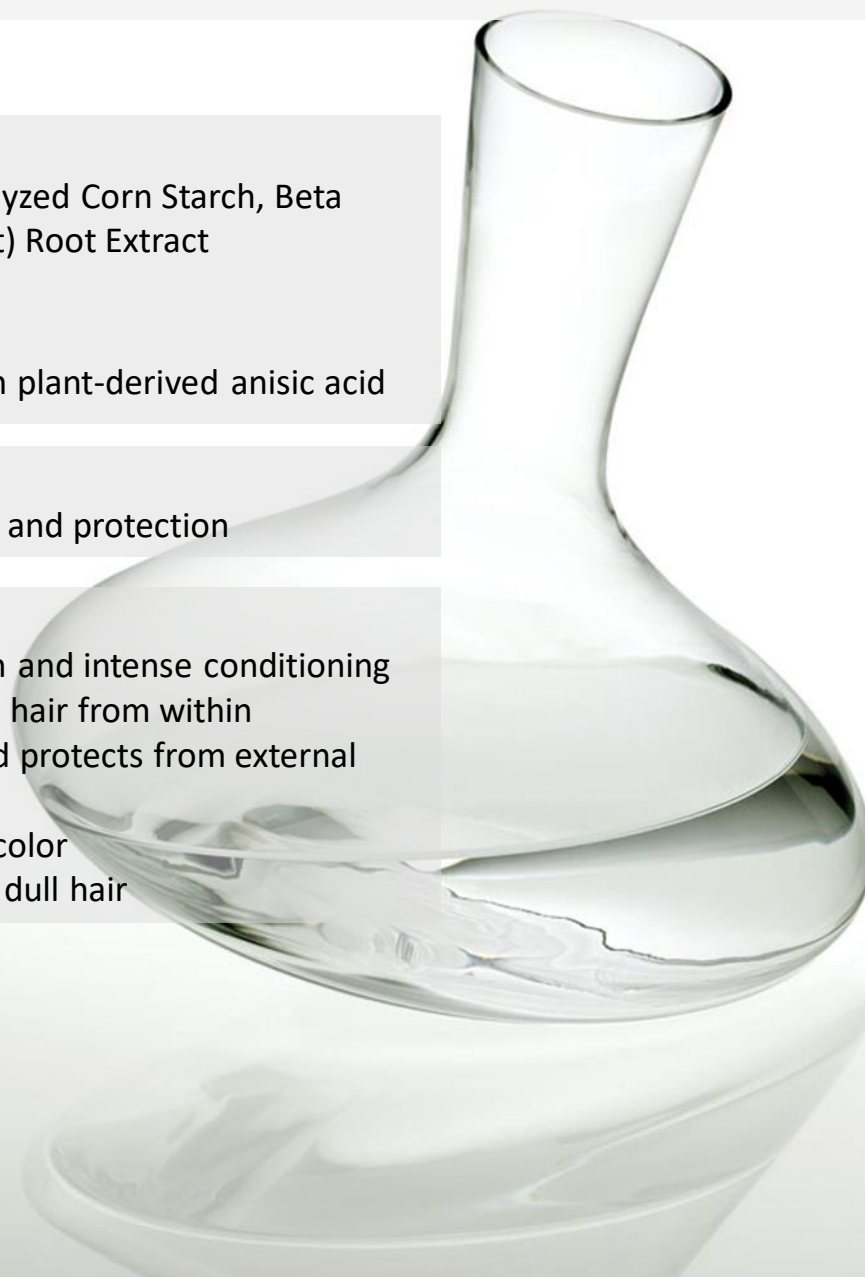
INCI Name: Water, Hydrolyzed Corn Starch, Beta Vulgaris (Beet) Root Extract
Dosage: 1.0 - 3.0%
pH-range: 3.0 - 10.0
Preservation: stabilized with plant-derived anisic acid

Applications

Moisturizing, Hair conditioning and protection

Marketing Opportunities

- Provides extreme hydration and intense conditioning
- Nourishes and protects the hair from within
- Improves hair structure and protects from external aggressors
- Intensifies for long-lasting color
- Restores vitality to dry and dull hair



Follicusan™ DP

INCI

INCI Name: Water, Alcohol Denat., Panthenyl Ethyl Ether, Milk Protein, Lactose, Inositol, Acetyl Cysteine, Acetyl Methionine, Sodium Citrate, Citric Acid

Dosage: 3.0 - 5.0%

pH-range: > 5.8

Preservation: preserved with phenoxyethanol and sodium dehydroacetate

Applications

Anti-hair loss

Marketing Opportunities

- Provides new vitality and energy to thinning hair
- Revitalizes the scalp, designed to counteract hair loss
- Stimulates and revitalizes the hair roots
- Improves health and structure of hair
- Fights hair follicle aging at its root



G+C Complex CLR™

INCI

INCI Name: Bifida Ferment Lysate
Dosage: 5.0 - 10.0%
pH-range: 3.8 - 7.0
Preservation: preserved with sodium benzoate

Applications

Skin protection

Marketing Opportunities

- Protects skin against premature aging
- Counteracts UV damage to maintain a radiant and youthful complexion
- Provides the skin with a comprehensive answer to aging
- Boosts the natural mechanism that extends the lifespan of youthful skin cells
- Activates natural cell protection processes



Hygroplex™- Skin

INCI

INCI Name: Hexylene Glycol, Fructose, Glucose, Sucrose, Urea, Dextrin, Alanine, Glutamic Acid, Aspartic Acid , Hexyl Nicotinate

Dosage: 2.0 - 5.0%

pH-range: 3.0 - 10.0

Preservation: unpreserved

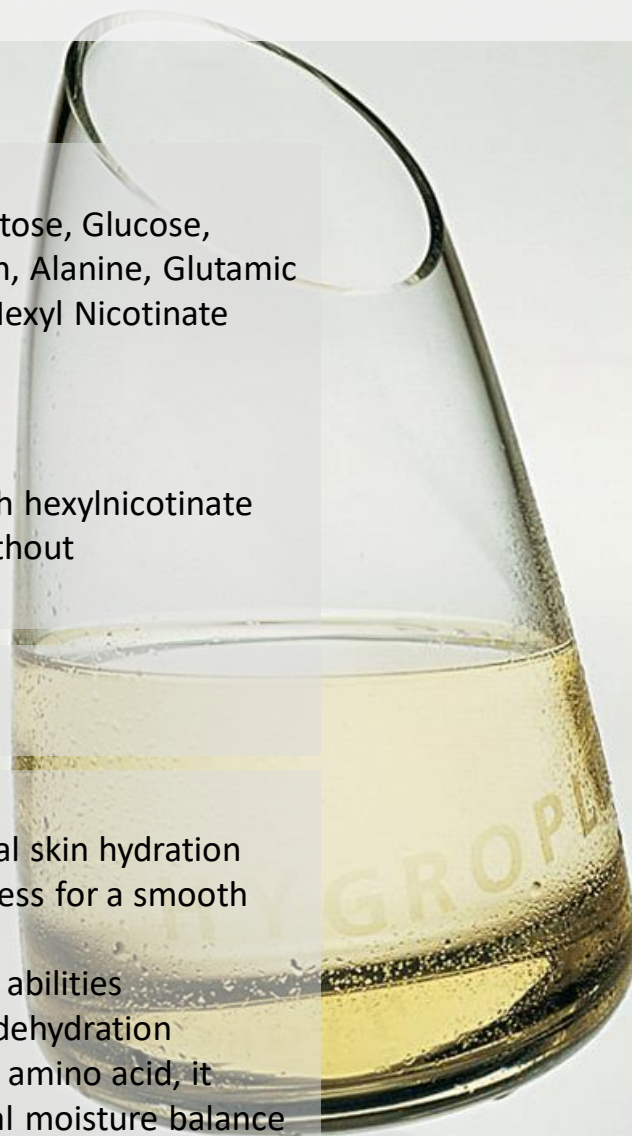
Also available as: **Hygroplex™ HHG** with hexylnicotinate
Hygroplex™ WHN without hexylnicotinate.

Applications

Moisturizing

Marketing Opportunities

- A goal-oriented approach to optimal skin hydration
- Moisturizes skin and prevents dryness for a smooth and fine finish
- Promotes skin's moisture-retaining abilities
- Improves signs of aging caused by dehydration
- Containing moisturizing sugars and amino acid, it helps skin re-obtain its physiological moisture balance



Hygroplex™- Hair

INCI

INCI Name: Hexylene Glycol, Fructose, Glucose, Sucrose, Urea, Dextrin, Alanine, Glutamic Acid, Aspartic Acid, Hexyl Nicotinate

Dosage: 1.0%

pH-range: 3.0 - 10.0

Preservation: unpreserved

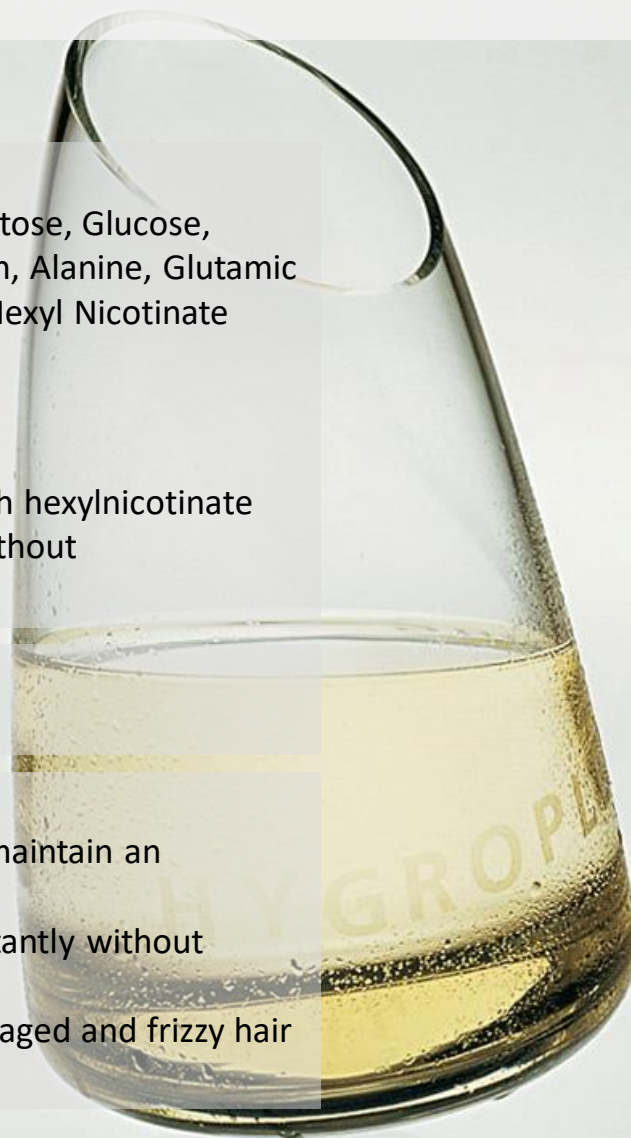
Also available as: **Hygroplex™ HHG** with hexylnicotinate
Hygroplex™ WHN without hexylnicotinate.

Applications

Hair conditioning and protection

Marketing Opportunities

- Feeds the hair what it requires to maintain an optimum level of hydration
- Replenishes hair with moisture instantly without overloading it
- The perfect treatment for dry, damaged and frizzy hair
- Makes hair more manageable



JuvenEye CLR™

INCI

INCI Name: Bellis Perennis (Daisy) Flower Extract,
Hieracium Pilosella (Hawkweed) Extract

Dosage: 3.0 - 5.0%

pH-range: 4.5 - 6.5

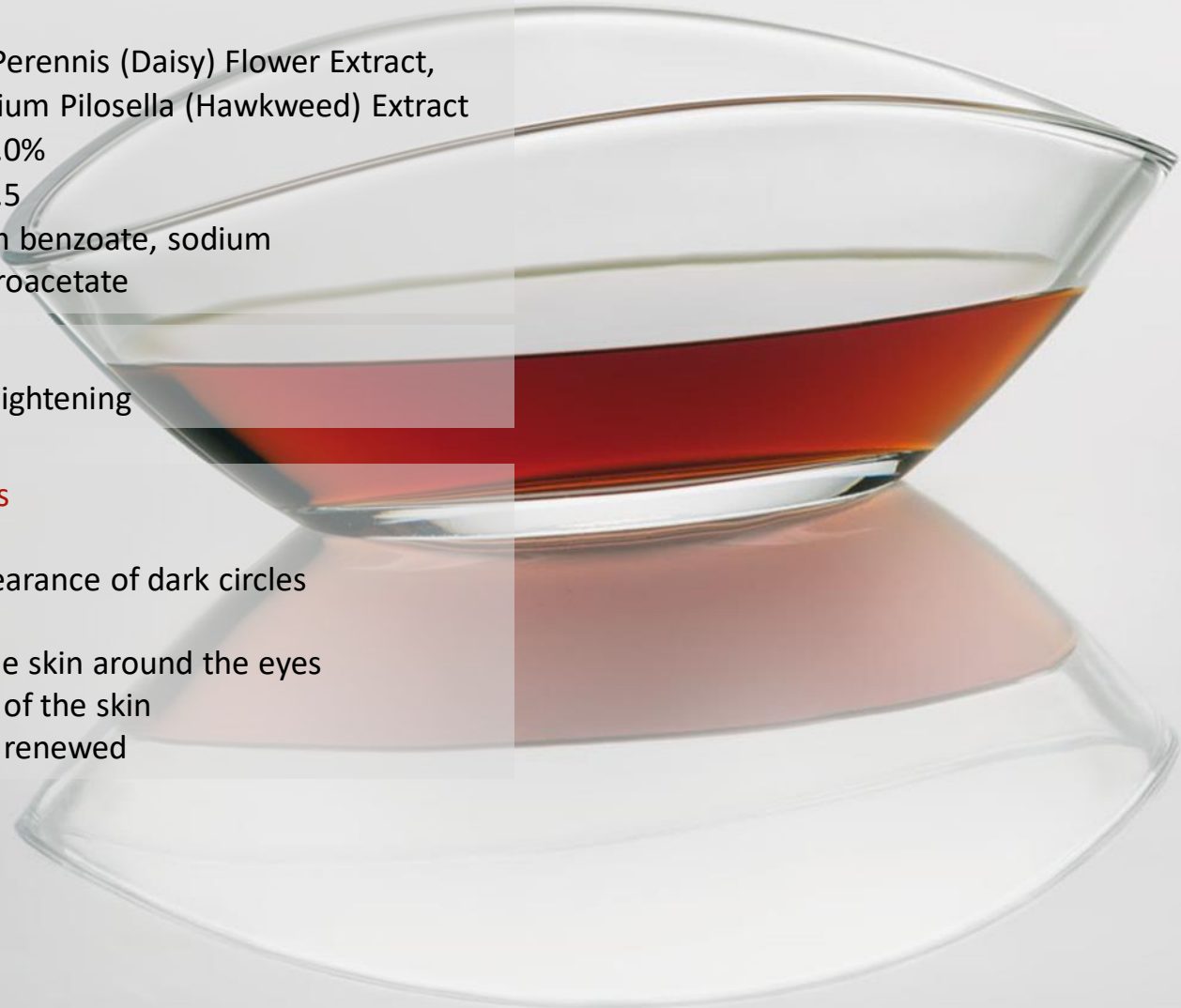
Preservation: sodium benzoate, sodium
dehydroacetate

Applications

Skin regeneration, Skin lightening

Marketing Opportunities

- For radiant eyes
- Diminishes the appearance of dark circles
- Relieves fatigue
- Gently stimulates the skin around the eyes
- Relieves congestion of the skin
- Leaves eyes looking renewed



Lactokine™ PF Fluid

INCI

INCI Name: Milk Protein

Dosage: 2.0 - 5.0%

pH-range: 5.8 - 7.0

Preservation: preserved with phenoxyethanol and sodium dehydroacetate

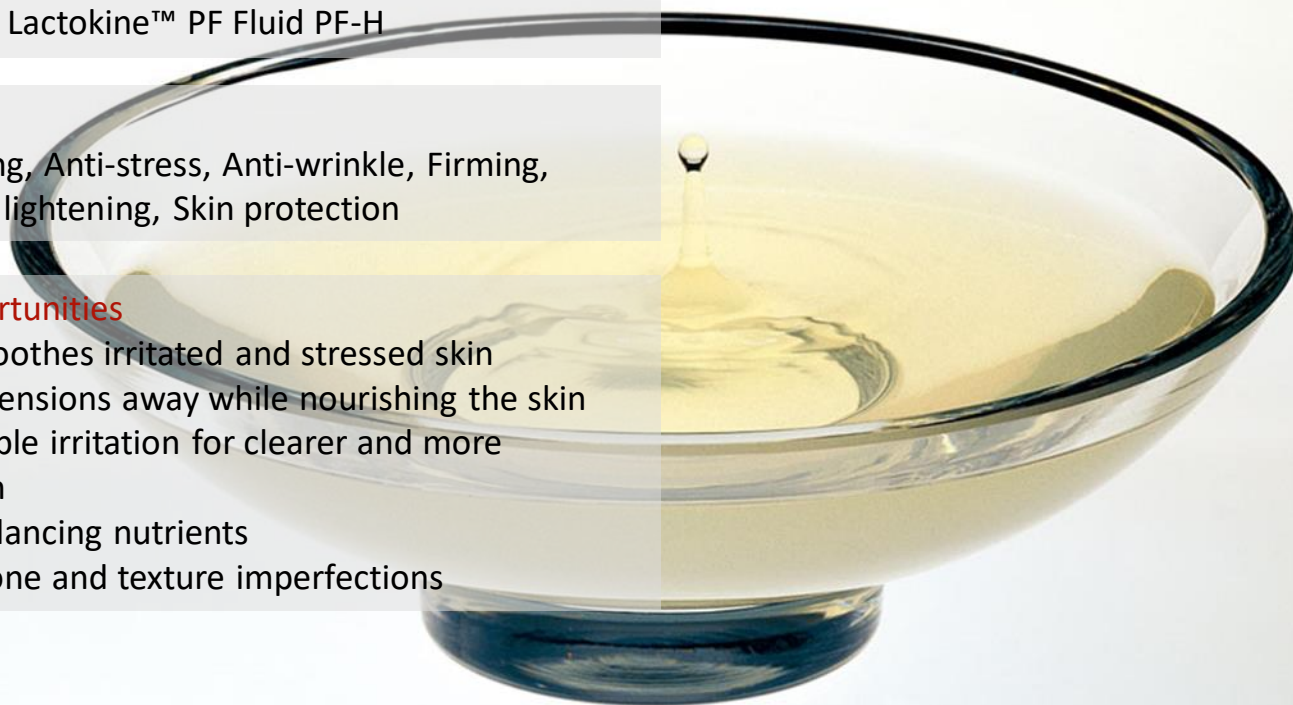
Also available as Lactokine™ PF Fluid PF-H

Applications

Soothing, Calming, Anti-stress, Anti-wrinkle, Firming, Smoothing, Skin lightening, Skin protection

Marketing Opportunities

- Calms and soothes irritated and stressed skin
- Melts daily tensions away while nourishing the skin
- Reduces visible irritation for clearer and more youthful skin
- Rich with balancing nutrients
- Minimizes tone and texture imperfections



Maricol S

INCI

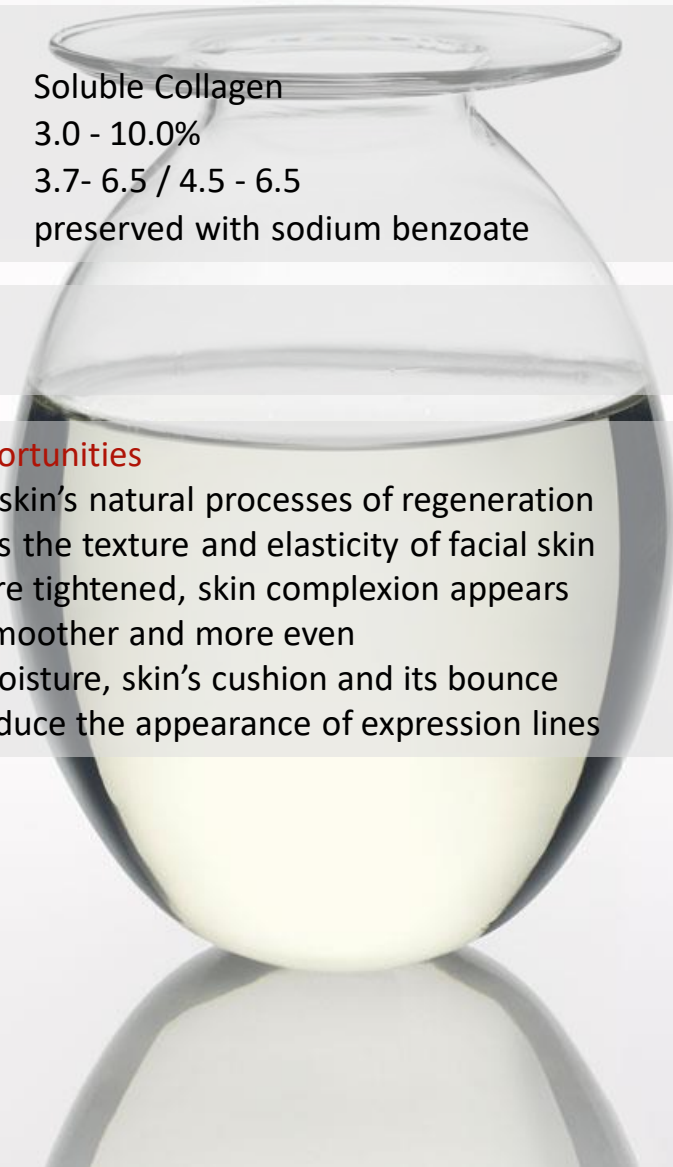
INCI Name: Soluble Collagen
Dosage: 3.0 - 10.0%
pH-range: 3.7- 6.5 / 4.5 - 6.5
Preservation: preserved with sodium benzoate

Applications

Moisturizing

Marketing Opportunities

- Boosts the skin's natural processes of regeneration
- Rejuvenates the texture and elasticity of facial skin
- Contours are tightened, skin complexion appears plumper, smoother and more even
- Restores moisture, skin's cushion and its bounce
- Helps to reduce the appearance of expression lines



Modukine™

INCI

INCI Name: Lactose, Milk Protein

Dosage: 0.5%

pH-range: 6.0 - 7.0

Preservation: unpreserved

Applications

Soothing, Calming, Anti-stress, Moisturizing, Barrier maintenance and repair

Marketing Opportunities

- Nourishes delicate skin for a soft, smooth and hydrated effect
- Revives sensitive skin
- Fights severe dryness to leave skin feeling soft and comfortable
- Restores skin suppleness by restoring skin moisture
- Provides instant relief to the skin
- Relieves sensations of hypersensitivity in delicate skin



MPC™-Milk Peptide Complex

INCI

INCI Name: Whey Protein
Dosage: 0.5%
pH-range: 6.0 - 7.0
Preservation: unpreserved

Applications

Anti-wrinkle, Firming, Soothing, Skin regeneration

Marketing Opportunities

- Visibly reduces wrinkles and lines and helps improve skin texture and firmness
- Sculpts and tones the skin from within
- Reprograms skin's future by boosting the production of essential proteins
- Reactivates skin's ability to look younger
- Gives a revitalizing anti-aging effect and enhances skin quality



MultiMoist CLR™- Skin



INCI

INCI Name: Fructooligosaccharides, Beta Vulgaris (Beet) Root Extract, Water

Dosage: 3.0%

pH-range: 3.0 - 8.0

Preservation: none

Applications

Moisturizing

Marketing Opportunities

- Designed to cleverly mimic the effects of vitamin D
- Removes negative effects of vitamin D deficiency
- Leaves skin bright, smooth and attractive
- Offers instant and long-lasting hydration
- Rapidly replenishes thirsty skin



MultiMoist CLR™- Hair



INCI

INCI Name: Fructooligosaccharides, Beta Vulgaris (Beet) Root Extract, Water

Dosage: 1.0%

pH-range: 3.0 - 8.0

Preservation: none

Applications

Hair conditioning and protection

Marketing Opportunities

- Intensely regenerates, repairs and strengthens hair
- Deeply nourishes hair from within
- Helps eliminate frizz and improves hair styling
- Instantly moisturizes both hair and scalp
- Potentiates vitamin D metabolism at the core of the hair follicle



PhytoDefense CLR™

INCI

INCI Name: Glycine Soja (Soybean) Oil, Dicaprylyl Ether, Magnolia Grandiflora Bark Extract, Lauryl Alcohol

Dosage: 3.0%

pH-range: 4.0 - 7.0

Preservation: stabilized with a natural rosemary extract concentrate as antioxidant

Applications

Soothing, Calming, Anti-stress

Marketing Opportunities

- Soothes uncomfortable and irritated skin
- Calms skin after shaving
- Helps regain and maintain skin well-being
- Bolsters skin's innate defenses
- Lastingly protects skin against external stresses



Phytosan™ K

INCI

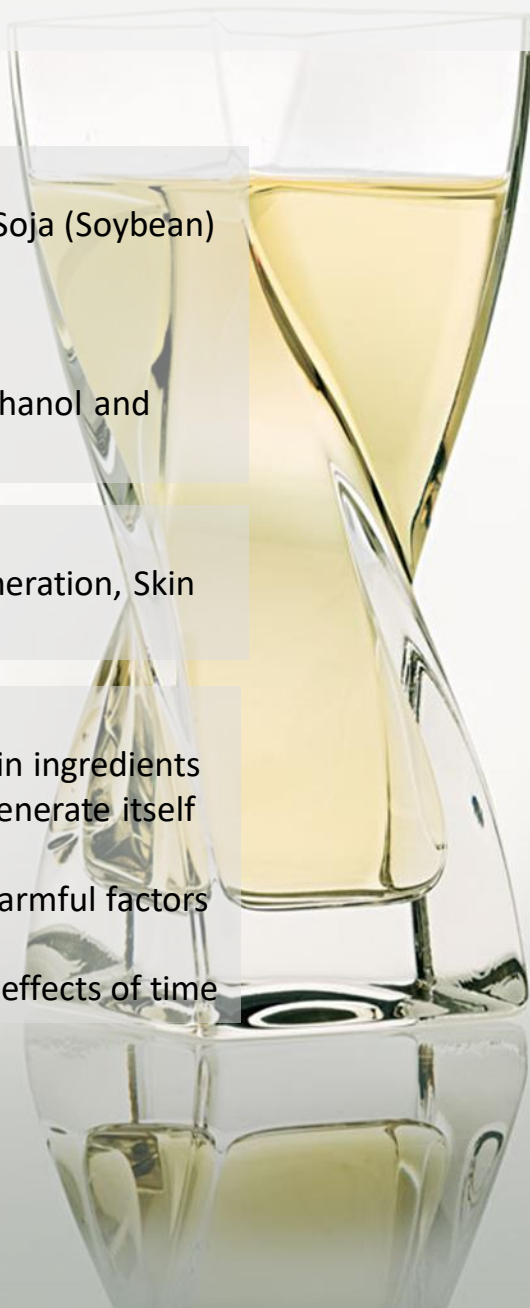
INCI Name: Water, Glycerine, Glycine Soja (Soybean) Seed Extract
Dosage: 2.0 - 5.0%
pH-range: 3.0 - 7.5
Preservation: Preserved with phenoxyethanol and potassium sorbate

Applications

Anti-wrinkle, firming, smoothing, Skin regeneration, Skin protection

Marketing Opportunities

- Prevents the degradation of essential skin ingredients
- Supports skin's ability to defend and regenerate itself
- Acts on the root causes of skin aging
- Strengthens the skin's defence against harmful factors while revitalizing the skin from its core
- Leaves skin more resistant to the visible effects of time



ProBarrier™ CLR

INCI

INCI Name: Water , Caprylic/Capric Triglyceride,
Copernicia Cerifera (Carnauba) Wax ,
Decyl Glucoside, Pentylene Glycol

Dosage: 3.0%

pH-range: 4.5 - 7.5

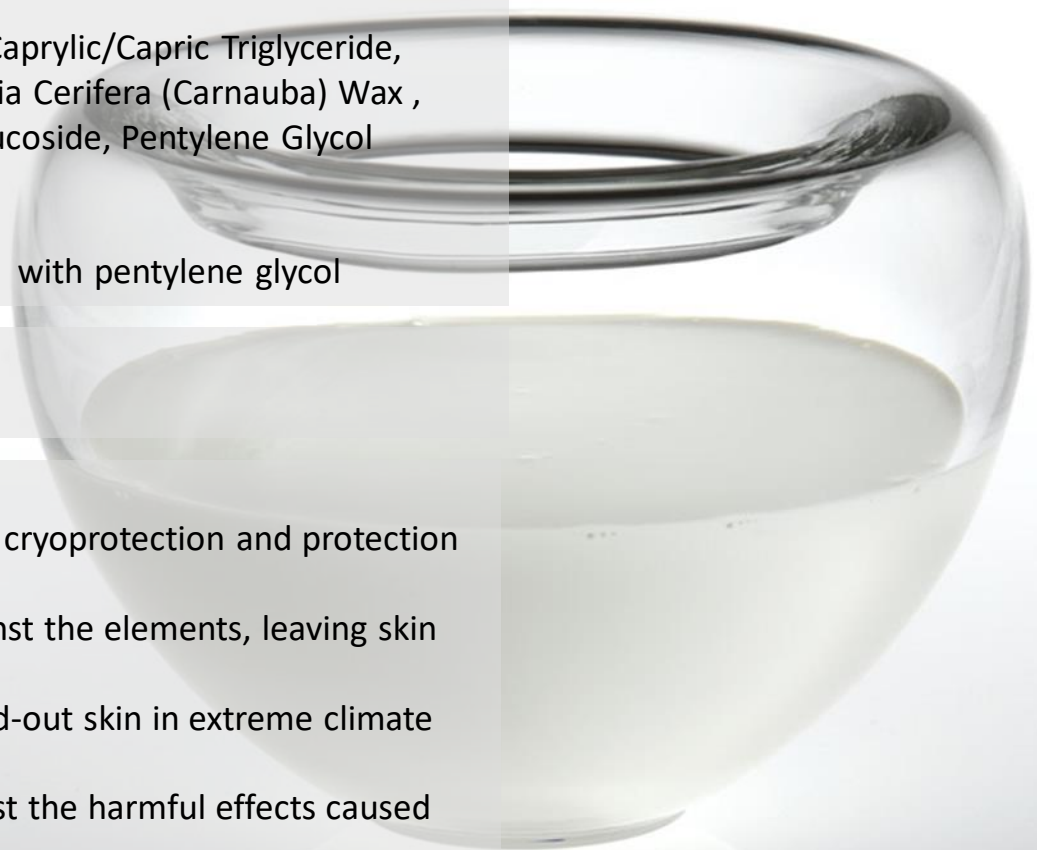
Preservation: stabilized with pentylene glycol

Applications

Skin protection

Marketing Opportunities

- This formulation offers cryoprotection and protection against cold
- Provides a barrier against the elements, leaving skin smooth and protected
- Formulated for stressed-out skin in extreme climate conditions
- Protects the skin against the harmful effects caused by urban environment
- Defends skin against pollution



ProBioBalance™ CLR NP

INCI

INCI Name: Water, Lactose, Milk Protein, Bifida Ferment Lysate
Dosage: 2.0 - 5.0 %
pH-range: 5.8 - 7.0
Preservation: stabilized with phenethyl alcohol

Applications

Soothing, calming, anti-stress, Skin protection

Marketing Opportunities

- Helps detoxify skin, neutralizes external attacks
- Rich in skin balancing nutrients
- Designed to relax the skin
- Supports natural skin cell repair to sustain essential cell functioning
- Helps skin cells boost the natural age-resisting function



ProRenew Complex CLR™

INCI

INCI Name: Lactococcus Ferment Lysate
Dosage: 3.0%
pH-range: 4.0 - 7.0
Preservation: 0.3% Sodium Benzoate
Also available as: ProRenew Complex CLR™ NP, stabilized with phenylpropanol and levulinic acid/sodium levulinate

Applications

Skin regeneration, Barrier maintenance and repair, Skin protection

Marketing Opportunities

- Relaunches skin's self regeneration potential
- Reinforces the skin
- Restores skin's natural health and beauty
- For the construction and preservation of the skin
- Fortifies skin's natural barrier



ProRenew Complex CLR™ - Scalp

INCI

INCI Name: Lactococcus Ferment Lysate
Dosage: 3.0%
pH-range: 4.0 - 7.0
Preservation: 0.3% Sodium Benzoate
Also available as: ProRenew Complex CLR™ NP, stabilized with phenylpropanol and levulinic acid/sodium levulinate

Applications

Skin regeneration, Barrier maintenance and repair, Skin protection, Hair and Scalp Care

Marketing Opportunities

- Soothes the scalp and reduces itching
- Reduces scalp oiliness and makes scalp less flaky
- Perceivably improves scalp health and overall scalp condition
- Leads to noticeable improvements after 1 week



ProRenew Complex CLR™- Microbiota

INCI

INCI Name: Lactococcus Ferment Lysate
Dosage: 3.0%
pH-range: 4.0 - 7.0
Preservation: 0.3% Sodium Benzoate
Also available as: ProRenew Complex CLR™ NP, stabilized with phenylpropanol and levulinic acid/sodium levulinate

Applications

Skin regeneration, Barrier maintenance and repair, Skin protection

Marketing Opportunities

- Supports and balances the skin microbiota
- Friendly and protective for the skin microbiota
- Works with the skin microbiota



SyriCalm™ CLR (PC)



INCI

INCI Name: Water, Phragmites Communis Extract,
Poria Cocos Extract

Dosage: 3.0%

pH-range: 3.0 - 8.0

Preservation: preserved with sodium benzoate

Also available as **SyriCalm™ CLR**

INCI: Water, Phragmites Karka Extract, Poria
Cocos Extract

Applications

Soothing, Calming, Anti-stress, Barrier maintenance and
repair

Marketing Opportunities

- Helps regain skin comfort and well-being
- Detoxifies irritants and neutralizes external attacks
- Reduces unpleasant sensations of tautness and irritation
- Designed to relax and fortify the skin
- Soothes visible irritation for clearer and more radiant-looking skin



Vitamin F forte- Skin

INCI

INCI Name: Linoleic Acid, Linolenic Acid
Dosage: 0.5 - 3.0%
pH-range: 3.0 - 10.0
Preservation: stabilized with a natural tocopherol concentrate as antioxidant

Applications

Moisturizing, Barrier maintenance and repair

Marketing Opportunities

- Strengthens the skin's quality and barrier function
- For protective strengthening
- Deeply nourishes and maintains the skin's natural balance
- Increases the skin's resistance to external aggressors
- Contributes to regaining the skin's healthy water content



Vitamin F forte- Hair

INCI

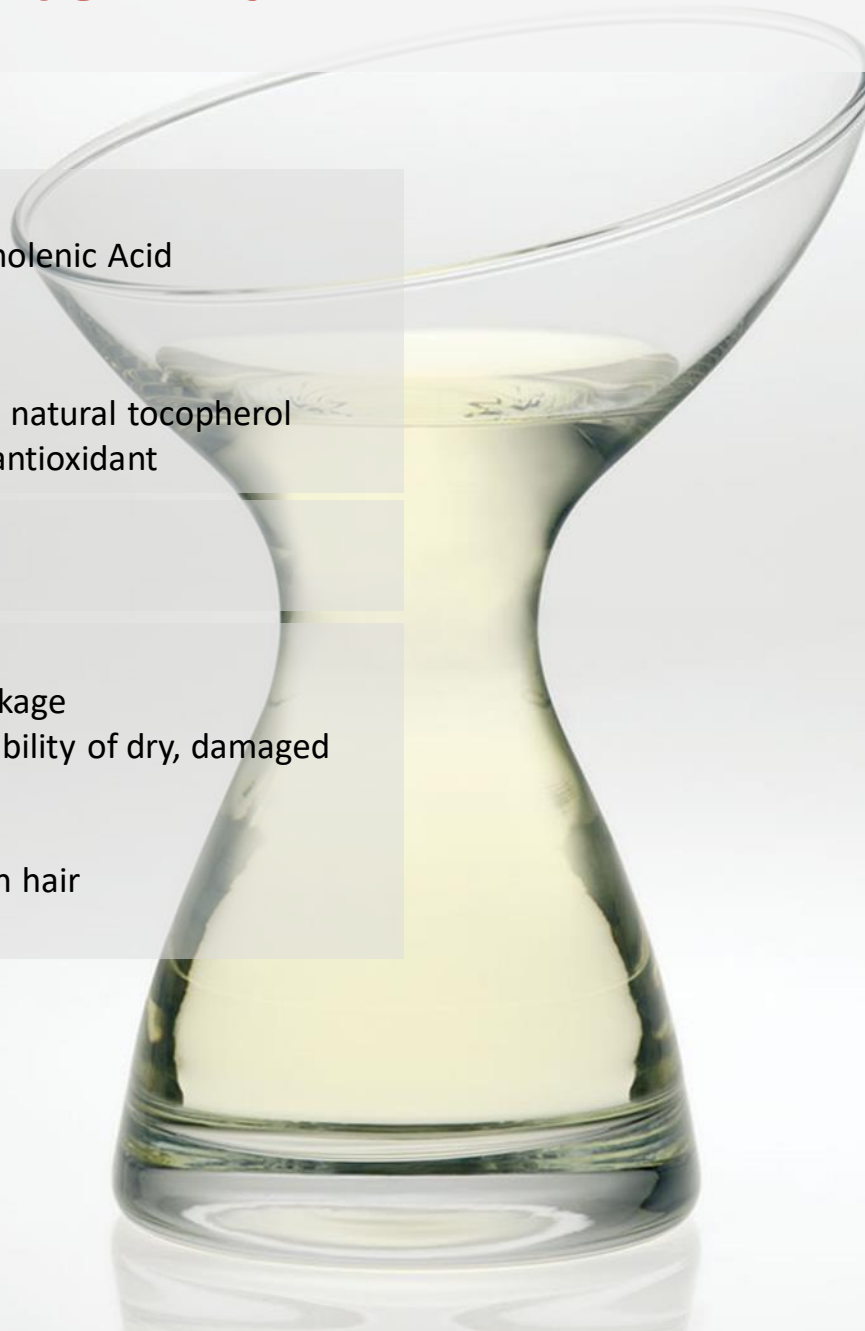
INCI Name: Linoleic Acid, Linolenic Acid
Dosage: 0.5 - 3.0%
pH-range: 3.0 - 10.0
Preservation: stabilized with a natural tocopherol concentrate as antioxidant

Applications

Hair conditioning and protection

Marketing Opportunities

- Reduces hair fall due to breakage
- Revives the natural manageability of dry, damaged and aged hair
- Provides heat protection
- Helps strengthen and nourish hair
- Smoothes the hair scales





for fine cosmetics since 1926